

The background of the advertisement features a vertical sequence of three water droplets falling from the top. The largest droplet is at the top, followed by a medium-sized one, and a small one at the bottom. Below the smallest droplet, the water surface is disturbed, creating a series of concentric ripples that spread outwards. The color palette transitions from a light teal at the top to a darker teal at the bottom, with a large, semi-circular red shape on the left side that overlaps the bottom and right edges of the image.

Make Health Easy

SpiritCare Urology

Delivering cost effective solutions
in primary care prescribing

spirit
health



Contents

Hydrophilic Intermittent Catheter	6-7
All Silicone Foley Catheter	8-9
Urine Leg Bags	10-11
Drainage Bag	12-13
Incontinence Sheaths	14-15



SpiritCare Urology Products

Secure | Discreet | Simple

The SpiritCare Urology portfolio offers budget holders and clinicians a cost-effective solution to prescribing catheters, sheaths and urine drainage bags.

For commissioners and budget holders

SpiritCare Urology enables annual prescribing savings of over 30% in primary care* and is accompanied by our complimentary Active Implementation programme, a resource available to support change management in a cost effective way.

Our team of clinical pharmacists and nurse educators provide remote and face-to-face support in line with NICE and local guidelines. We work with primary care and community nurse teams to ensure appropriate patients benefit and are supported through change. Our team expand capacity to deliver change quickly and ensure cost savings are realised in practice.

For patients

The SpiritCare Urology range provides users with high quality materials designed to provide security, comfort and ease-of use, giving patients confidence to manage their health condition.



In-year guaranteed savings



**Complimentary Active
Implementation support**



Quality Assurance

*Prescribing Data Analysis, data on file, Spirit Healthcare



SpiritCare Hydrophilic Intermittent Catheter

The SpiritCare Hydrophilic Catheter is a sterile, single use, medical device intended for intermittent catheterisation of the urinary bladder and is suitable for urethral use. The tube is made of DEHP-FREE PVC (Polyvinyl Chloride) and coated with PVP (Polyvinylpyrrolidone). The hydrophilic coating is activated using the sterile water sachet included. A non-touch sleeve is also included to aid insertion and as a protection against infection/contamination.

Packaging has been designed to be easy to use with features including a thumb grip and adhesive tab.

Features

- DEHP-FREE PVC (Polyvinyl Chloride)
- PVP (Polyvinylpyrrolidone) hydrophilic coating to reduce irritation of urethral mucosa
- Latex-free
- Sterilised using Ethylene Oxide
- Sterile water sachet
- Non-touch sleeve
- Available in Male (370mm) and Female (130mm) lengths in a choice of sizes
- Sold in packs of 30

	Product Code	Size (Ch)	Length	Colour	PIP Code
SpiritCare Male Hydrophilic Intermittent Catheter	SH-CC023	8	370mm	Blue	418-6029
	SH-CC024	10	370mm	Black	418-6037
	SH-CC025	12	370mm	White	418-6060
	SH-CC026	14	370mm	Green	418-6078
	SH-CC027	16	370mm	Orange	418-6102
	SH-CC028	18	370mm	Red	418-6110
SpiritCare Female Hydrophilic Intermittent Catheter	SH-CC029	8	130mm	Blue	418-6086
	SH-CC030	10	130mm	Black	418-6045
	SH-CC031	12	130mm	White	418-6052
	SH-CC032	14	130mm	Green	418-6128
	SH-CC033	16	130mm	Orange	418-6094

Key Features

Thumb grip

Allows the package to be easily opened even if manual dexterity is limited. It can also be used to hang the catheter packaging.

Adhesive tab

For reliable attachment to any dry and clean surface, allowing both hands to remain free.

Tube

Flexible tube with smooth tip and eyes.

Easy-open water sachet

Gently squeeze to break open the sachet. Water comes out in the direction of the arrow to lubricate the catheter for use.

Hydrophilic coating

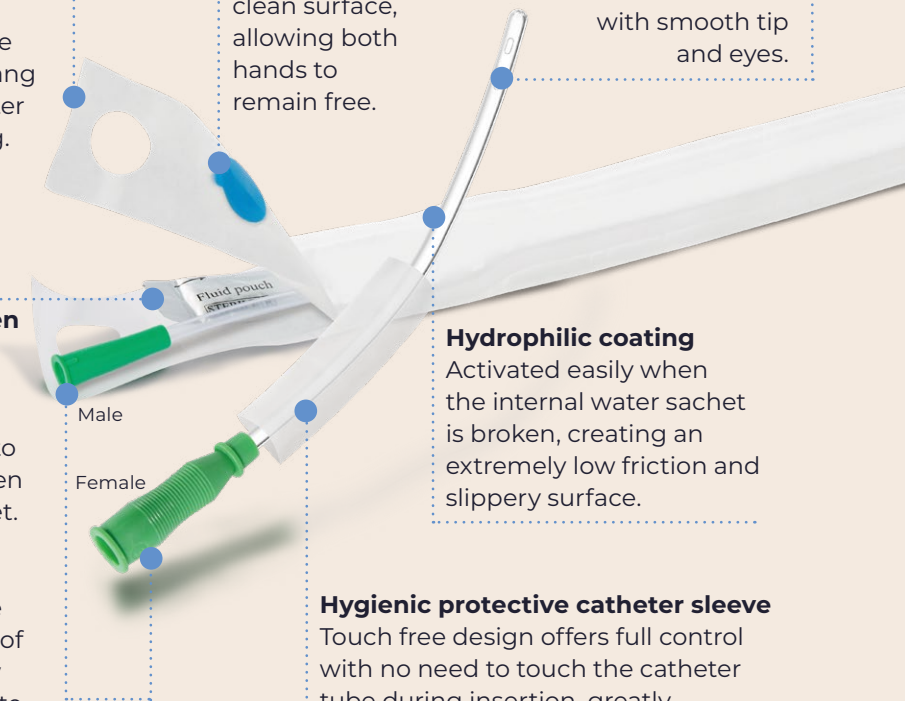
Activated easily when the internal water sachet is broken, creating an extremely low friction and slippery surface.

Hygienic protective catheter sleeve

Touch free design offers full control with no need to touch the catheter tube during insertion, greatly minimising the risk of infection.

Protective hand grip

Different design for male and female use. Special ergonomic grip design is easy to control and is tailor made for women's needs.



SpiritCare All Silicone Foley Catheter

The SpiritCare All Silicone Foley Catheter is intended for catheterisation of the urinary bladder and is appropriate for urethral and suprapubic use. The 2-way catheter comes in female and male/standard lengths and is 100% silicone. A pre-filled 10ml sterile syringe for balloon inflation and an empty 10ml syringe for deflation and catheter removal are also included.

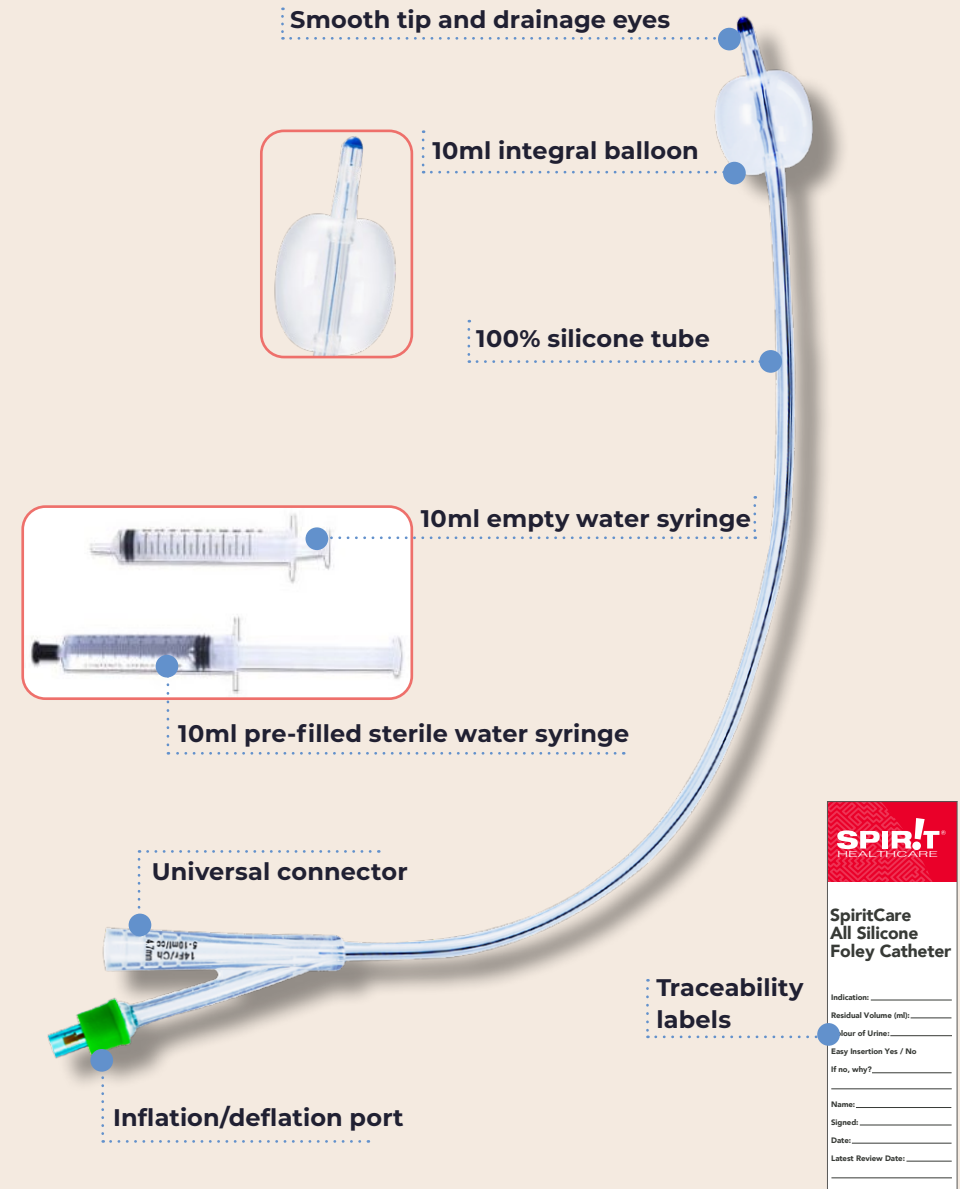
Packaging has been designed to include easy-peel off labels to record details, and for placing in patient records.

Features

- 100% silicone
- Latex free
- Single-use (Sterilised using Ethylene Oxide)
- 2 way, Female (260mm) and Male/Standard (400mm) lengths
- 2x 10ml sterile syringes (one pre-filled with sterile water for inflation)
- 10ml integral balloon
- Flexible smooth straight tip
- 2 x eyes for optimal drainage
- Traceability labels for tracking and recording details
- Sold as individuals

	Product Code	Size (Ch)	Length	Colour	PIP Code
SpiritCare All Silicone Foley Catheter - Male/Standard	SH-CC034	12	400mm	White	418-6573
	SH-CC035	14	400mm	Green	418-6599
	SH-CC036	16	400mm	Orange	418-6581
	SH-CC037	18	400mm	Red	418-6607
SpiritCare All Silicone Foley Catheter - Female	SH-CC038	12	260mm	White	418-6615
	SH-CC039	14	260mm	Green	418-6623
	SH-CC040	16	260mm	Orange	418-6631
	SH-CC041	18	260mm	Red	418-6649

Key Features



SpiritCare Leg Bags

The SpiritCare leg bag is a sterile medical device to collect urine drained from a catheter and other devices. The bags are composed of medical grade PVC film, and the anti-kink tubing and anti-reflux valves help prevent urine back flow, blockages, accidents and leakages.

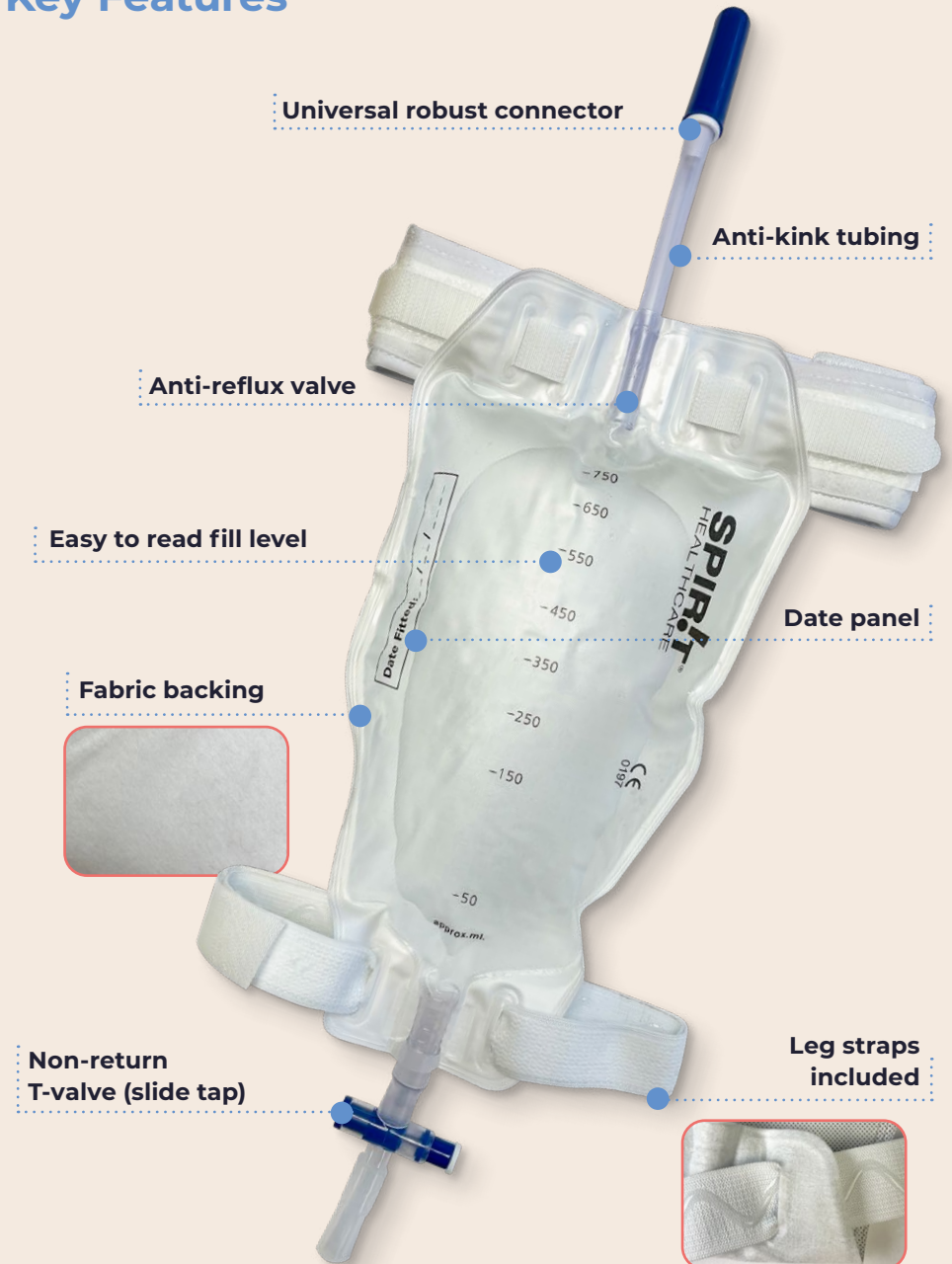
Our leg bags have been designed to make life easier for users, with comfortable fabric backing and leg straps, T-valve taps suitable for one-handed drainage, and easy to read fill level markings.

Features

- Range of medical grade PVC sterile urine bags
- Latex free
- Soft fabric backing for extra comfort
- Anti-kink tubing to prevent blockages and accidents
- Anti-reflux valve minimises urine back flow
- T-valve drainage valve – easy glide function
- Easy to read fill level
- Robust universal connector
- Comfort straps included (54cm)
- Standard sizes – 350ml, 500ml and 750ml capacity
- Sold in packs of 10

	Product Code	Capacity	Tube Length	PIP Code
SpiritCare Leg Bag - Short (Pack of 10)	SH-CC001	350ml	10cm	418-9981
	SH-CC003	500ml	10cm	418-9999
	SH-CC005	750ml	10cm	419-0005
SpiritCare Leg Bag - Long (Pack of 10)	SH-CC002	350ml	30cm	419-0047
	SH-CC004	500ml	30cm	419-0054
	SH-CC006	750ml	30cm	419-0062

Key Features



SpiritCare Drainage Bag

The SpiritCare Drainage Bag has a large 2 litre drainage capacity designed to collect urine drainage from a catheter. The 120cm tube length makes it especially suitable for bedbound patients or for overnight usage. Made from latex-free medical grade PVC, it is a non-sterile medical device, intended for single use only.

It consists of a urine drainage bag and an easy to use T- valve outlet. The front is transparent, and the back is white to ensure measurements are easy to read. The anti-reflux valve and anti-kink tubing reduces the risk of backflow and prevents accidental leakage.

Features

- PVC
- Latex free
- Easy to view urine output level
- Anti-kink tubing to prevent blockages and accidents
- Anti-reflux valve minimises urine back flow
- T-valve drainage valve – easy to empty
- Robust universal connector
- 2000ml capacity
- Sold in packs of 10
- Single use only

	Product Code	Capacity	Tube Length	PIP Code
Spirit Drainage Bag	SH-CC022	2000ml	120cm	321-3161

Key Features



SpiritCare Incontinence Sheaths

The SpiritCare Incontinence Sheath is a 100% silicone, latex-free, male external catheter or urinary sheath to help manage male incontinence in a discreet and secure way. It is a non-sterile medical product.

The medical adhesive on the inside of the sheath is skin-friendly providing safe adherence to the penis, patient comfort and minimises the potential for leakages. The one-piece system is easy to apply and is designed for easy removal. The anti-kink silicone funnel helps ensure continuous urine flow and can be securely connected to SpiritCare urine bags and all other urine collection bags.

Features

- 100% silicone – hypoallergenic, good breathability and transparent to allow for skin condition monitoring
- Latex free
- Non-sterile for single use only
- Skin-friendly acrylic adhesive (to the inside)
- Anti-kink silicone funnel
- Wide range of diameter sizes (24mm – 40mm)
- Available in 3 lengths - Standard, Short and Wide
- Disposable tray included
- 3 year shelf life
- Sold in packs of 30

	Product Code	Diameter	Size	PIP Code
SpiritCare Incontinence Sheath - Standard	SH-CC007	24mm	Standard	419-0021
	SH-CC008	28mm	Standard	418-9973
	SH-CC009	31mm	Standard	418-9965
	SH-CC010	35mm	Standard	419-0013
	SH-CC011	40mm	Standard	419-0039
SpiritCare Incontinence Sheath - Short	SH-CC012	24mm	Short	419-1045
	SH-CC013	28mm	Short	419-1011
	SH-CC014	31mm	Short	419-1029
	SH-CC015	35mm	Short	419-1037
	SH-CC016	40mm	Short	419-1052
SpiritCare Incontinence Sheath - Wide	SH-CC017	24mm	Wide	419-1144
	SH-CC018	28mm	Wide	419-1136
	SH-CC019	31mm	Wide	419-1128
	SH-CC020	35mm	Wide	419-1102
	SH-CC021	40mm	Wide	419-1110

Key Features

**100% silicone
(hypoallergenic,
good breathability,
transparent)**

**Anti-kink funnel (easy,
secure connection to
urine bags)**



Disposable tray

**Skin-friendly
adhesive
(comfort, security
and ease of use)**





Here to help...

To find out more about SpiritCare Urology
or to request a sample pack, please email us at

meds-op@spirit-health.com

Spirit Family of Companies
Spirit House, Saffron Way
Leicester, LE2 6UP

T: 0116 286 5000
F: 0116 271 9901
www.spirit-health.com

HEA4097FEB22

spirit
health