

CASE STUDY

Easing capacity by enabling earlier discharge for COVID-19 patients using virtual ward



Background

As hospitals faced an acute capacity crisis as a result of the COVID-19 pandemic, the adoption of digital technology was accelerated to help look at alternative models of care.

Remote monitoring technology and virtual wards were deployed to help expedite the safe discharge of COVID patients, helping to free up beds and better manage patient flow.

Aims & Objectives

- ✓ To ease capacity concerns as COVID-19 admissions continued to rise
- ✓ To enable patients with COVID-19 to be discharged from hospital sooner
- ✓ To maximise clinical resources and manage caseloads more efficiently
- ✓ To adapt and re-deploy an existing solution with proven results

Key Numbers

288

Hospital bed days saved between January – April 2021

218

COVID-19 patients were discharged with CliniTouch Vie from Nov 20 – May 21

31.6%

Of non-intensive care hospital beds occupied by COVID-19 patients at peak



“A digital approach can help us be smart about how we use our resources so that we’re able to cope with a bigger caseload of potentially deteriorating patients more efficiently.”



Dr Irene Valero-Sanchez
Consultant Respiratory Physician and Clinical Lead for Integrated Care, University Hospitals of Leicester



Results

The COVID-19 virtual ward service was designed and deployed following successful projects to remotely monitor COPD and heart failure patients across Leicestershire. Once again, the team turned to CliniTouch Vie to help provide care at home, enabling earlier supported discharge from Glenfield Hospital.

As a result, the hospital was able to save a considerable number of bed days, whilst the use of digital support once discharged meant the re-admission rate halved.



288

Total hospital bed days saved between January – April 2021



50%

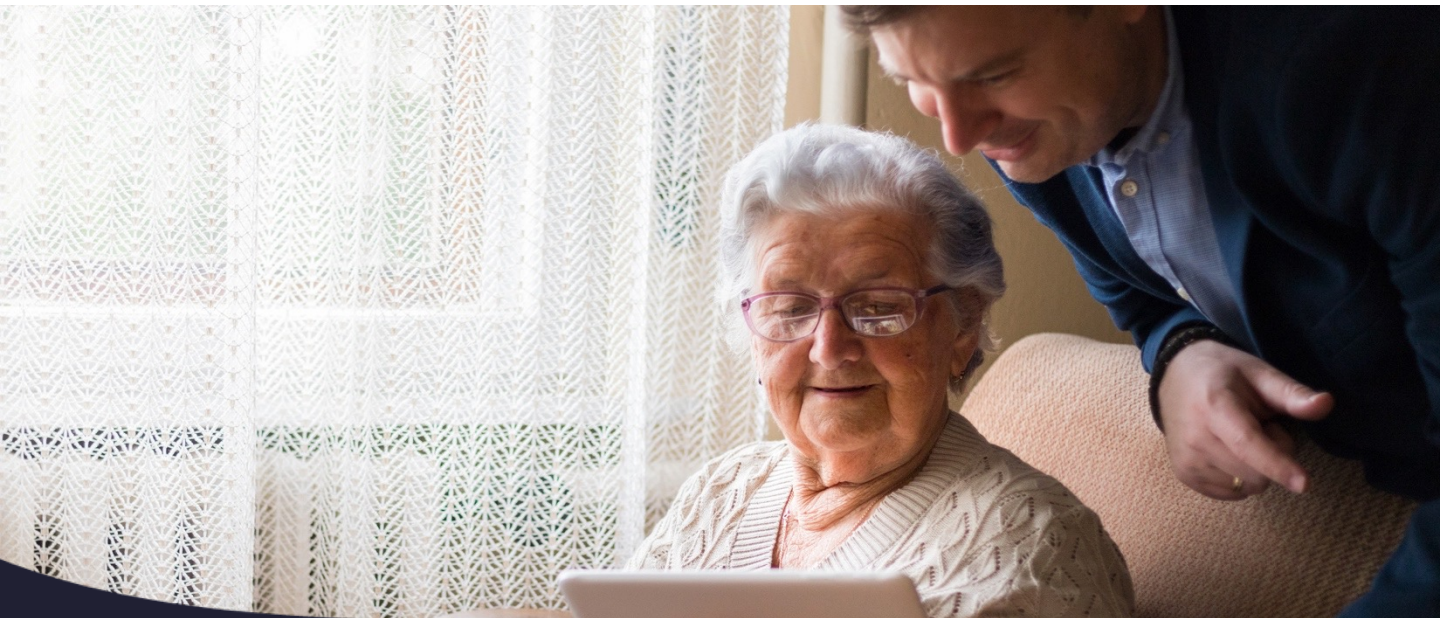
Reduction in re-admission rate among patients supported by virtual ward



£40,818

Estimated gross savings as a result of reduced re-admissions

Source: NHSX Innovation Collaborative: Developing virtual wards to manage long-term conditions across the Midlands.



Our aim is simple: to shift care safely from busy hospitals to patients' homes using technology-enabled care. From long-term conditions to episodic care, we can support the digitisation of multiple clinical pathways using CliniTouch Vie.

For more information, simply **scan the QR code** or get in touch using the details below.

Scan for more information

