

# SpiritCare Hydrophilic Intermittent Catheter

## Instructions for Use

### Properties

The SpiritCare Hydrophilic Intermittent Catheter is a sterile, single use hollow tube inserted into the bladder to drain urine at regular intervals. It's hydrophilic surface coated with PVP (Polyvinylpyrrolidone) becomes smooth/slippy once it has been in contact with water, this allows for easy and atraumatic insertion through the urethra into the bladder. The SpiritCare Hydrophilic Intermittent Catheter includes a sterile water sachet to be used to activate the hydrophilic surface of the catheter.

### Intended Use

The SpiritCare Hydrophilic Intermittent Catheter is intended for catheterisation of the urinary bladder and is appropriate for urethral use.

### Indications

For intermittent bladder drainage. The SpiritCare Hydrophilic Intermittent Catheter can be inserted by the patient, a family member, a healthcare professional or a caregiver.

### Contraindications

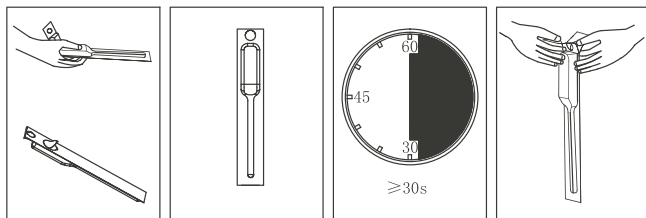
None known.

### Potential Complications

- Urinary Tract Infection
- Urethral Bleeding or Injury
- Urethritis
- Inflammation of the urethral meatus
- Urethral strictures
- Urethral false passage

## Directions for Use of SpiritCare Hydrophilic Intermittent Catheter

- Always wash hands before use
- Before insertion, clean the urethral opening and the surrounding area.
- Before catheterisation, activate the hydrophilic coating of the catheter. To do this, squeeze the water from the water sachet into the catheter packaging using the gap identified on the package. The catheter should be kept in the sterile water for 30 seconds before insertion.
- Hold the touch-free sleeve or the connector of the catheter with the dominant hand and insert the catheter slowly and gently into the urethra until urine begins to flow freely. Direct the catheter to a suitable container or a toilet.
- When the urine stops flowing, remove the catheter slightly and slowly, stop if the urine starts to flow again.
- Put the catheter back into the package and dispose in accordance with advice from your healthcare professional. Do not flush it down the toilet.
- Wash your hands after use



## Warnings / Precautions

Intermittent self-catheterisation is a common procedure; however, you should seek guidance from your healthcare professional and carefully read the instructions before use. Use of the SpiritCare Hydrophilic Intermittent Catheter should only be carried out under medical advice and in accordance with the instructions given.

In case of potential urinary infection with symptoms such as fever, discomfort on emptying bladder, frequent need to empty bladder or blood in urine; in the event of a serious side effect or side effects not indicated in the guidelines, please contact your Healthcare Professional.

Users should be trained in the proper use of the SpiritCare Hydrophilic Intermittent Catheter.

Spirit Healthcare accepts no liability or loss that may arise if this product is not used entirely according to the company's recommendations.

- Sterile if package is unopened and undamaged
- Single use only, not intended for reprocessing; any re-sterilisation or re-use of the product can result in hazard to the patient
- Do not use after the expiry date
- Precautions shall be taken when discarding device. Disposal of the device shall be made in accordance with applicable national regulations for biological hazardous waste
- Choose an appropriate size. This should be guided by your healthcare professional.
- Insert gently into the urethra, avoiding damage to the urethra mucosa.


## Storage

- Store in a dark, cool and dry place.
- Protect product from moisture and excessive heat.
- Avoid prolonged exposure to ultraviolet, sunlight and fluorescent light.
- When stored, ensure heavy items are not left on catheters.

Products available

	Code	Size
<b>SpiritCare</b> <b>Male Hydrophilic Intermittent</b> <b>Catheter with water sachet</b>	SH-CC023	8Ch
	SH-CC024	10Ch
	SH-CC025	12Ch
	SH-CC026	14Ch
	SH-CC027	16Ch
	SH-CC028	18Ch
<b>SpiritCare</b> <b>Female Hydrophilic Intermittent</b> <b>Catheter with water sachet</b>	SH-CC029	8Ch
	SH-CC030	10Ch
	SH-CC031	12Ch
	SH-CC032	14Ch
	SH-CC033	16Ch

 Sterilised using Ethylene Oxide

 Do not use if package is damaged


 Authorised representative in the European Community

 Medical Device

 Latex-free

 Caution

 Temperature limit

 Do not reuse



 Manufacturer


 Date of manufacture

 Use by date

 Single Sterile Barrier System

 Article no

 Batch code

 Consult the instructions for use

 Store in a dry place

 Keep away from sunlight